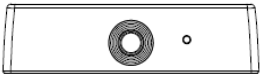







BC-200 Firmware(FW) Update Manual

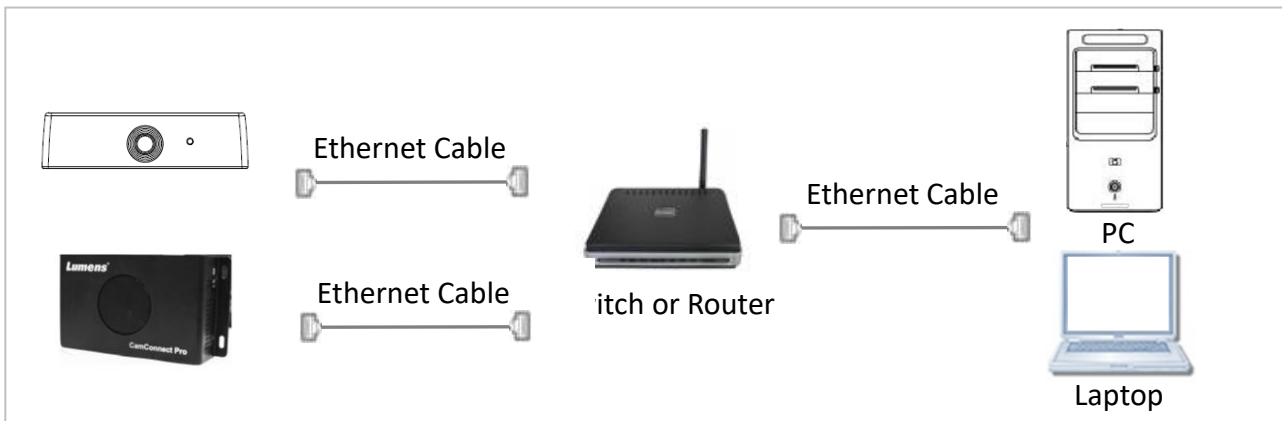
1 Device and Tool Preparation

1.1 Please prepare following devices and tools before FW upgrade.

BC-200	PC or Laptop	
		or 
Camconnect Pro	Power adapter and power cord	Ethernet cable x2
		

2 Connections

2.1 Connected to the same network as Camconnect Pro.



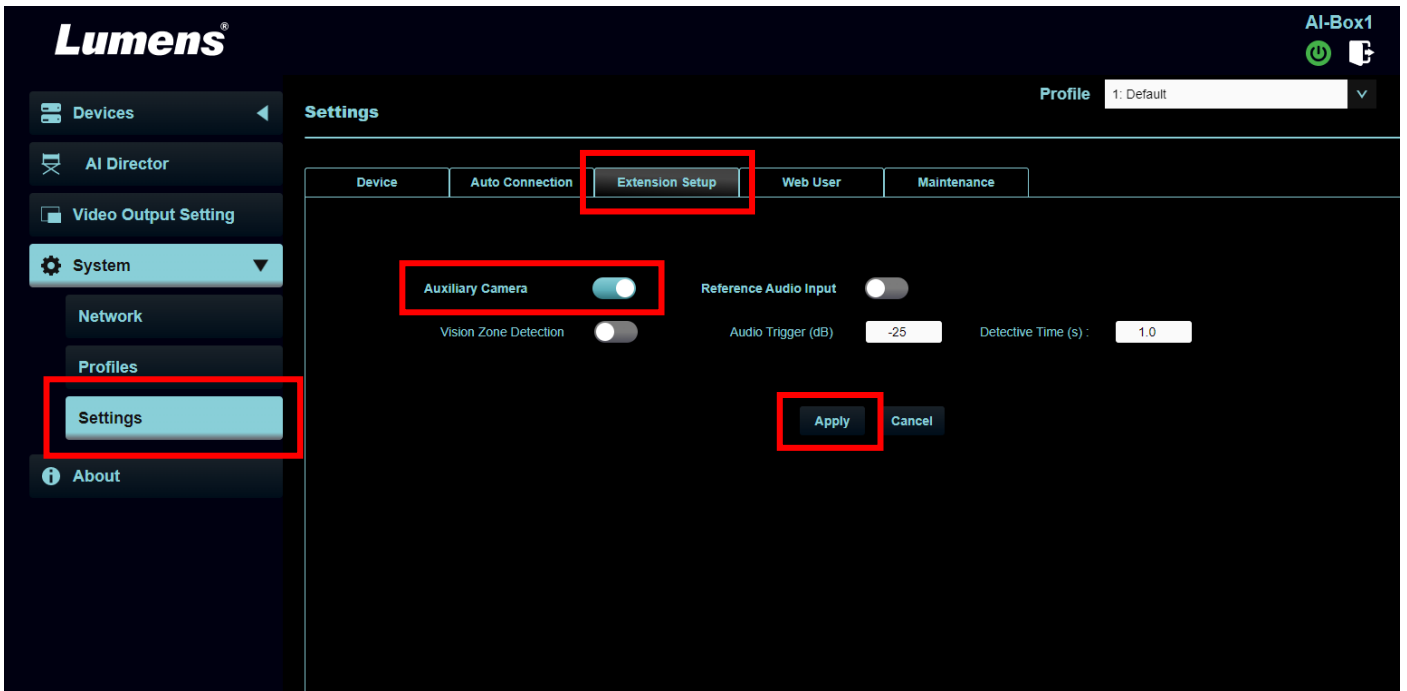
3 Find BC-200 IP address

3.1 Open browser and enter the IP address of the Camconnect Pro in the address bar.

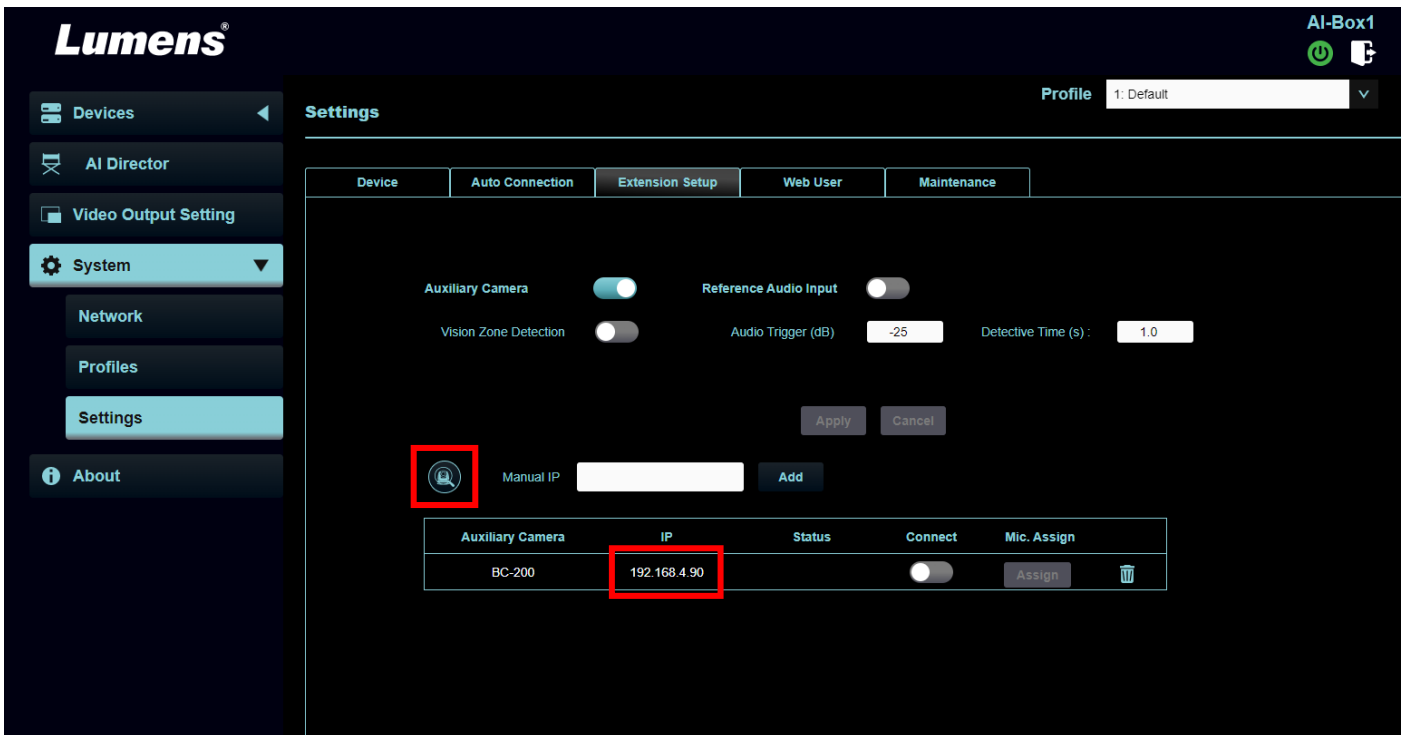
- You can check the IP address from the [Operation Interface].



3.2 Select [System]> [Setting] to enable [Auxiliary Camera] and press [Apply].

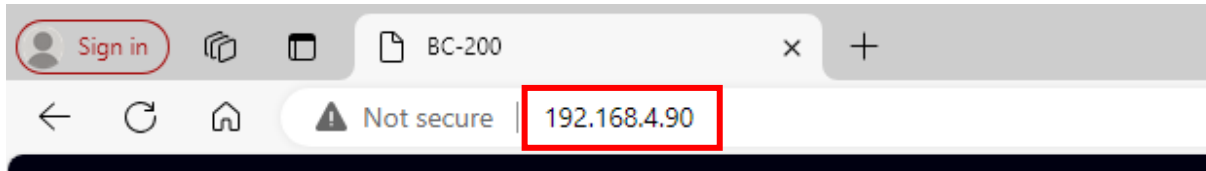


3.3 Click on the search icon to find the BC-200 IP address.

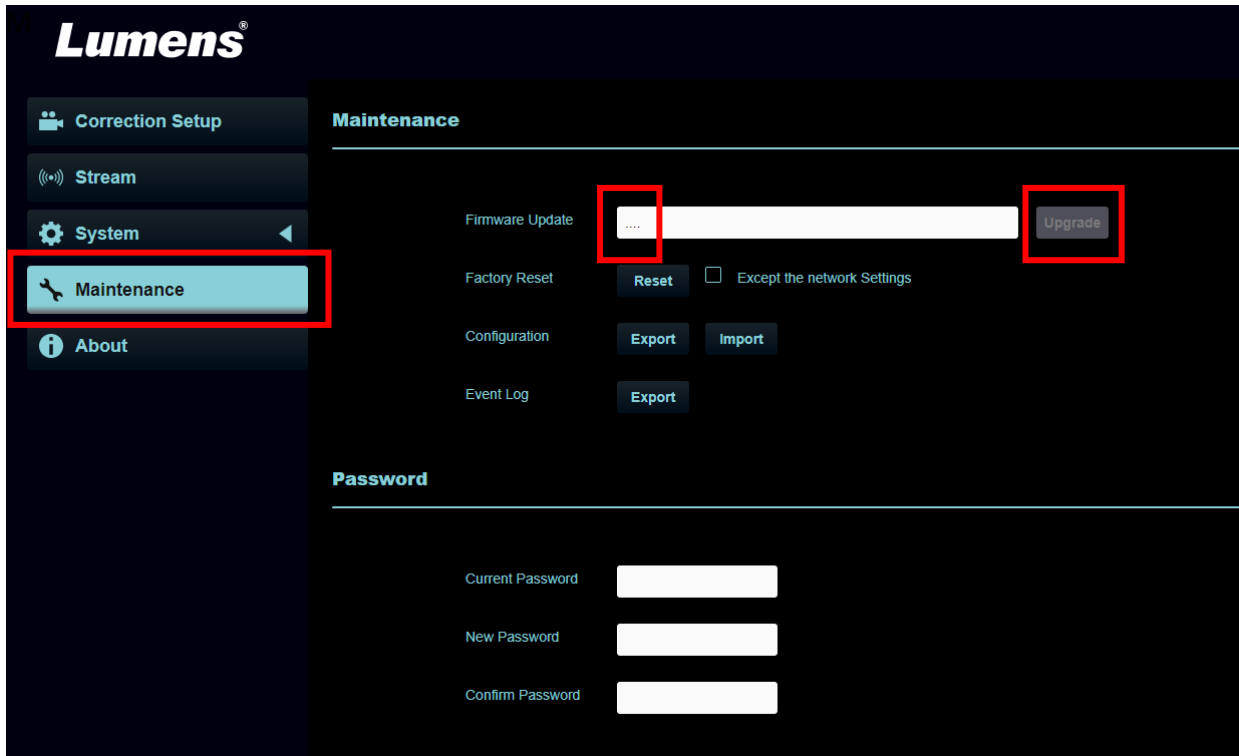


4 FW update

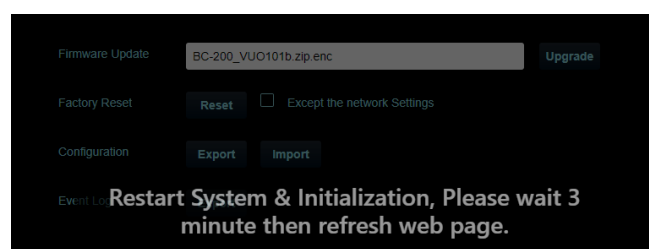
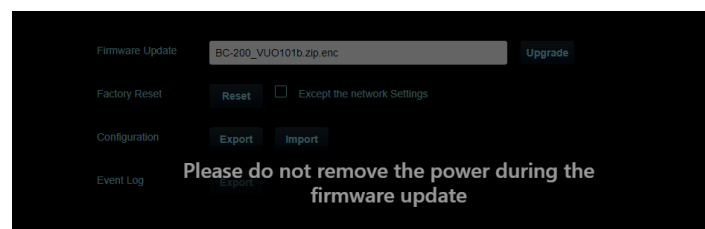
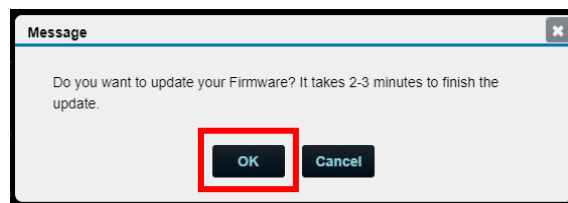
4.1 Open Browser and enter the IP address of the BC-200 in the address bar.



4.2 Select [Maintenance] > [...] to select firmware file and press [Upgrade].



4.3 FW download starts, please don't close the page. (Around 3 minutes taken)



4.4 Refresh the webpage and check the FW version from [About] > [Firmware Ver.].

